



INTERNATIONAL STANDARDS FOR NEUROLOGICAL
CLASSIFICATION OF SPINAL CORD INJURY
(ISNCSCI)



Date of Exam _____ Time of Exam _____

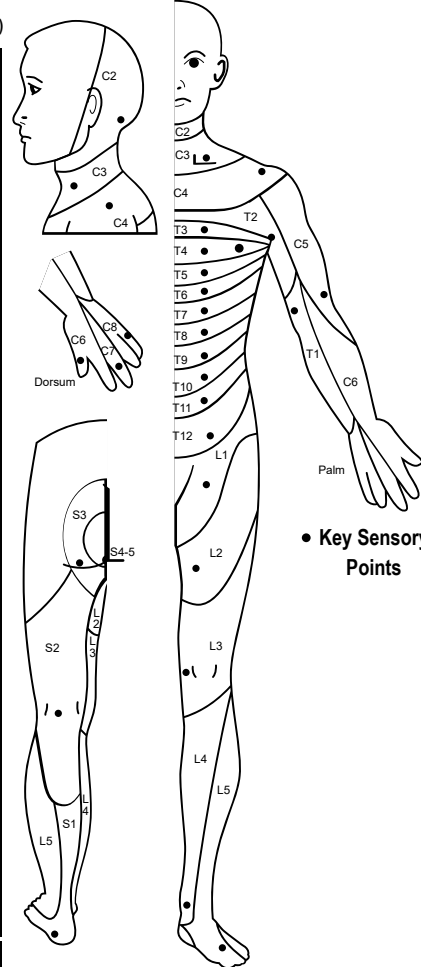
Examiner Name _____ Signature _____

☐ PT ☐ Spine Surgeon ☐ Physiatrist ☐ CNS ☐ Other (specify): _____

RIGHT

**MOTOR
KEY MUSCLES**

**SENSORY
KEY SENSORY POINTS**
Light Touch (LT) Pin Prick (PP)



• Key Sensory Points

**SENSORY
KEY SENSORY POINTS**
Light Touch (LT) Pin Prick (PP)

**MOTOR
KEY MUSCLES**

LEFT

UER
(Upper Extremity Right)

Elbow flexors C5
Wrist extensors C6
Elbow extensors C7
Finger flexors C8
Finger abductors (little finger) T1

Comments (Non-key Muscle? Reason for NT? Pain? Non-SCI condition?):

LER
(Lower Extremity Right)

Hip flexors L2
Knee extensors L3
Ankle dorsiflexors L4
Long toe extensors L5
Ankle plantar flexors S1

(VAC) Voluntary anal contraction (Yes/No) ☐

RIGHT TOTALS
(MAXIMUM) (50) (56) (56)

MOTOR SUBSCORES

UER ☐ + UEL ☐ = UEMS TOTAL ☐
MAX (25) (25) (50)

LER ☐ + LEL ☐ = LEMS TOTAL ☐
MAX (25) (25) (50)

SENSORY SUBSCORES

LTR ☐ + LTL ☐ = LT TOTAL ☐
MAX (56) (56) (112)

PPR ☐ + PPL ☐ = PP TOTAL ☐
MAX (56) (56) (112)

UEL
(Upper Extremity Left)

Elbow flexors C5
Wrist extensors C6
Elbow extensors C7
Finger flexors C8
Finger abductors (little finger) T1

**MOTOR
(SCORING ON REVERSE SIDE)**

0 = total paralysis
1 = palpable or visible contraction
2 = active movement, gravity eliminated
3 = active movement, against gravity
4 = active movement, against some resistance
5 = active movement, against full resistance
NT = not testable
0*, 1*, 2*, 3*, 4*, NT* = Non-SCI condition present

**SENSORY
(SCORING ON REVERSE SIDE)**

0 = absent
1 = altered
2 = normal
NT = not testable
0*, 1*, NT* = Non-SCI condition present

LEL
(Lower Extremity Left)

Hip flexors L2
Knee extensors L3
Ankle dorsiflexors L4
Long toe extensors L5
Ankle plantar flexors S1

(DAP) Deep anal pressure (Yes/No) ☐

LEFT TOTALS
(MAXIMUM) (50) (56) (56)

BCR Status ☐ Present ☐ Absent ☐ Unknown

Cauda Equina Syndrome: ☐ Yes ☐ No ☐ Unknown

Need help? Automated classification available at: www.isncscialgorithm.com

**NEUROLOGICAL
LEVELS**

Steps 1-6 for classification as on reverse

1. SENSORY ☐ R ☐ L
2. MOTOR ☐ R ☐ L

3. NEUROLOGICAL
LEVEL OF INJURY (NLI) ☐

4. COMPLETE OR INCOMPLETE? ☐
Incomplete = Any sensory or motor function in S4-5
5. ASIA IMPAIRMENT SCALE (AIS) ☐

(In injuries with absent motor OR sensory function in S4-5 only)

6. ZONE OF PARTIAL
PRESERVATION ☐
Most caudal level with
any innervation

SENSORY ☐ R ☐ L
MOTOR ☐ R ☐ L

Other Neurological Deficit
☐ Myelopathy
☐ Periph. nerve injury NO cord injury
☐ Periph. nerve injury with cord injury
☐ None
☐ Unknown